



WAIHEKE MARINE PROJECT

WAIHEKE KI UTA WAIHEKE KI TAI WAIHEKE KI TUA



Waiheke ki uta, Waiheke ki tai, Waiheke ki tua



How did it start and what does it do ?



Phase one 2019 to October 2021

The delay of our Future Search Hui caused by the pandemic provided the opportunity for a deeper conversation.

The projects Future Search was eventually held in Spring 2020

A series of workshops, further community and mana whenua engagement, fundraising and then a work plan was formed.

Ngāti Pāoa placed a four species rāhui on the area in January 2021. This was backed up by Government Fisheries Act - section 186A legislation.





Nine voice groups and Nine common ground statements

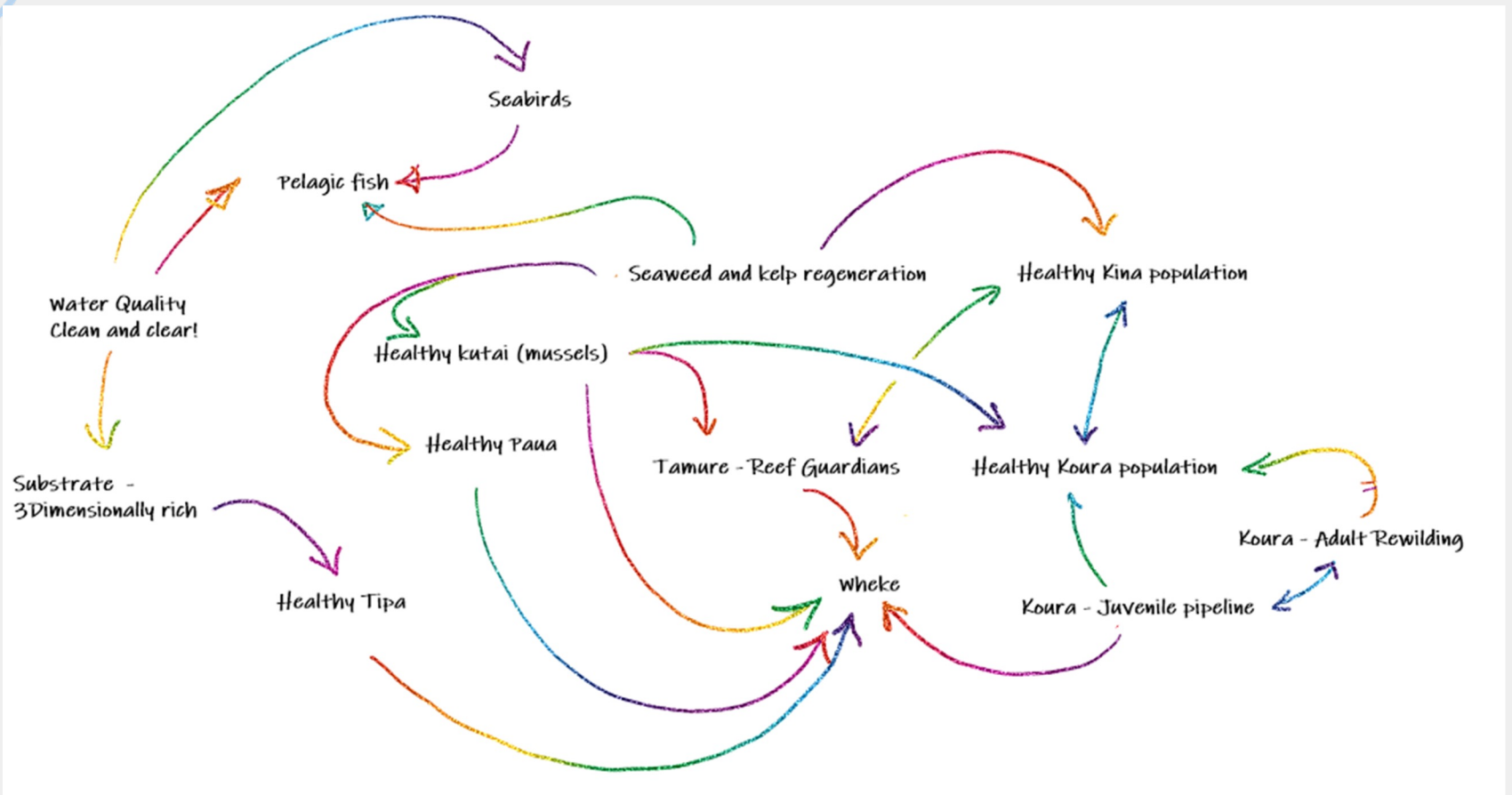
- Locals
- Mana whenua (Ngāti Pāoa ki Waiheke)
- Conservationists
- Scientists
- Youth
- Fishers & boaties
- Land interests
- Marine businesses
- Agencies & politicians
- Te Tiriti o Waitangi
- Mauri
- Learning
- Integrated Management
- Protection Tools
- Effective Legislation
- Clean Water
- The 'Waiheke Way'
- Circular Economy



Phase two is the active phase - *Pipi's are born*

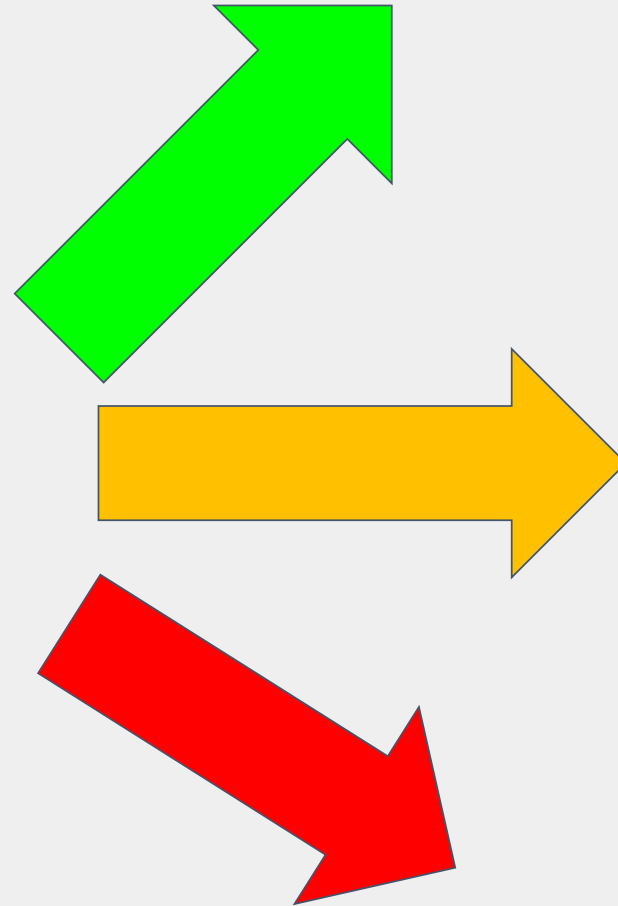
- Kelp Gardeners Phase 1,2 & ?
- Regenerative Dive Training
- Fishing equipment recycling
- A Digital Action Tracker
- ***Kōura dive survey***
- ***Kōura rewilding***
- Kororā survey with DOC & WWF
- Outer reef seaweed restoration
- Conscious Swim

Linked Life - System Restoration

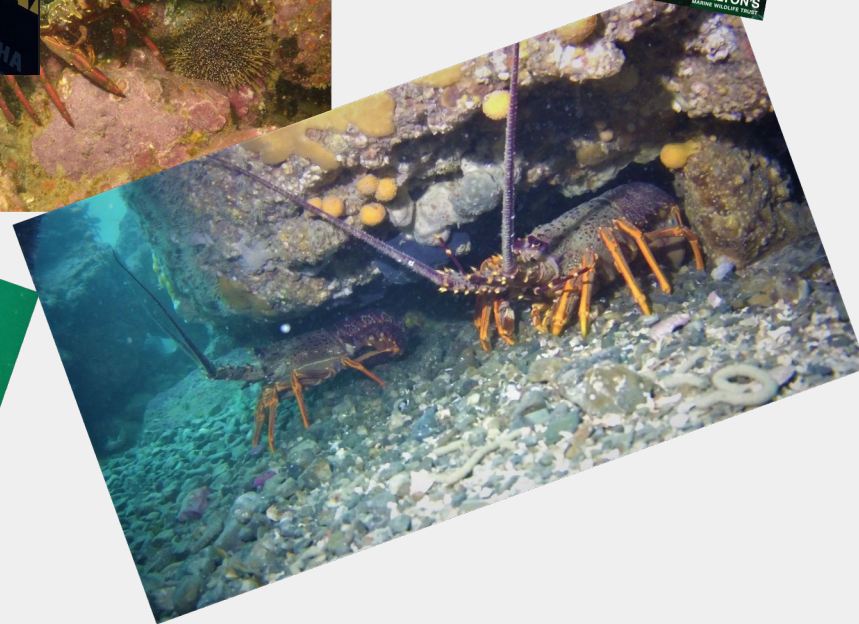
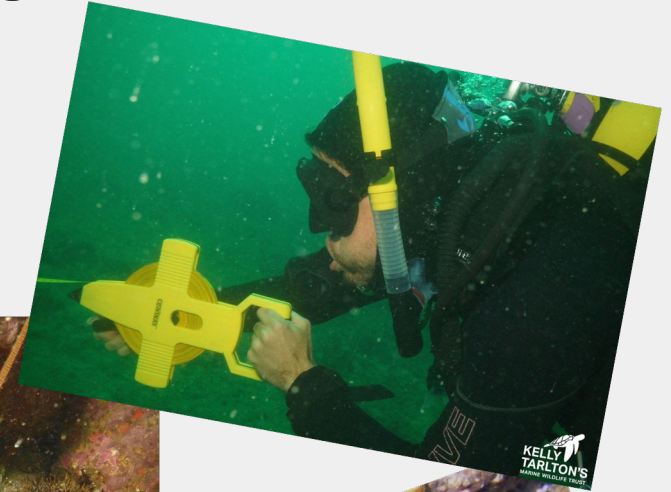




There are only 3 trends



Get your seekers seeking !



Kōura Survey 2021 and 2022

2021 - Inaugural survey

- 36 TRANSECTS DIVED
- 18,000m² SEARCHED
- 72 PERSON DIVES
- APPROX 1,440 MINUTES UNDERWATER
- 37 km OF COAST
- **TOTAL - 23 CRAYFISH**



2022 - 35% increase in effort

- 56 TRANSECTS DIVED
- 28,000m² SEARCHED
- 112 PERSON DIVES
- APPROX 2,240 MINUTES UNDERWATER
- 37 km OF COAST
- **TOTAL - 26 CRAYFISH**



Kina Management - 'Kelp Gardeners'



Our Priority List



WHERE WE FOCUSSED EFFORTS



Valorising all knowledge: science, local, and especially Mātauranga Māori



Hands-on Learning



Engaging mana whenua and community



Great communications



Building relationships Tangata-Taiao



36 months

13,000 Kina
harvested

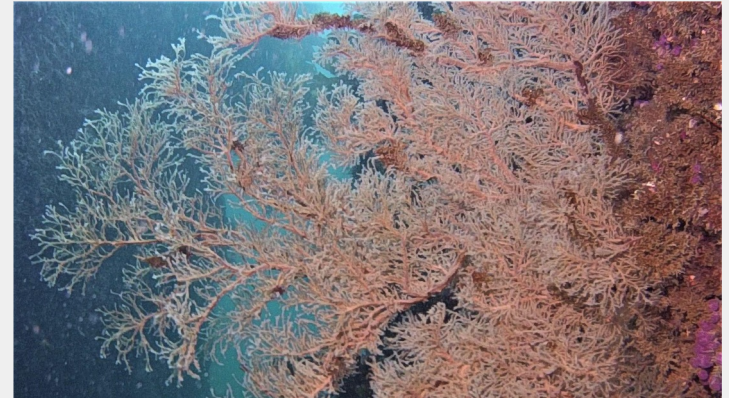
Kelps and
Seaweeds
Increasing



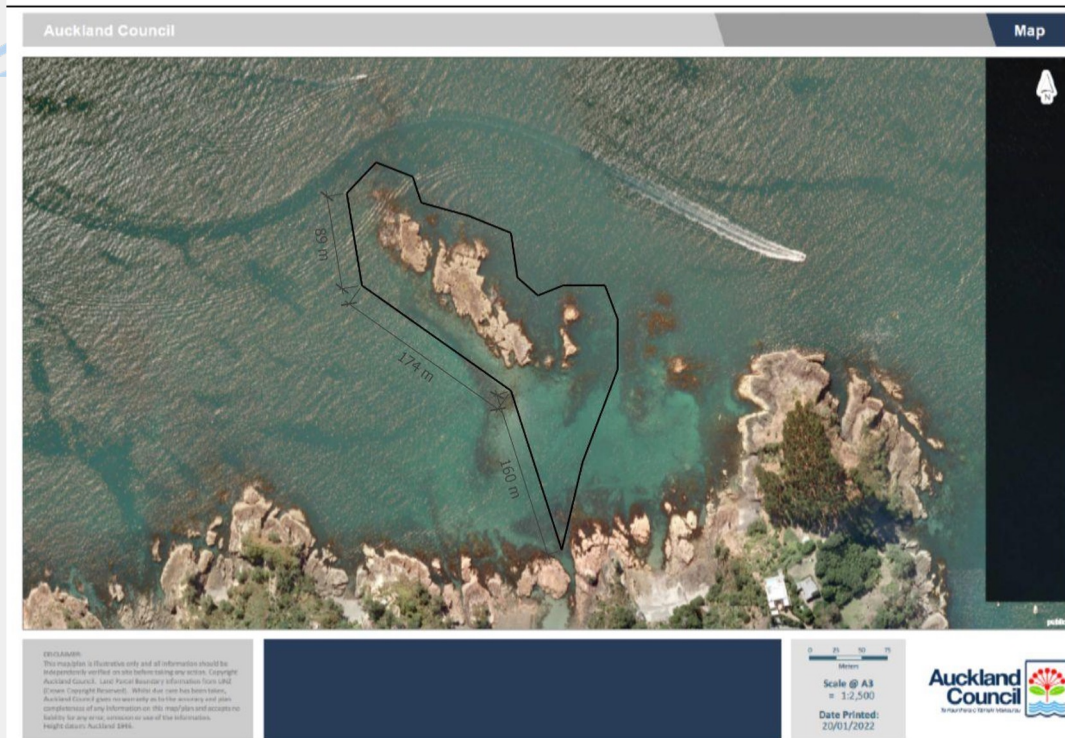
Density
dropped from
6.m2 to $< 1/m^2$



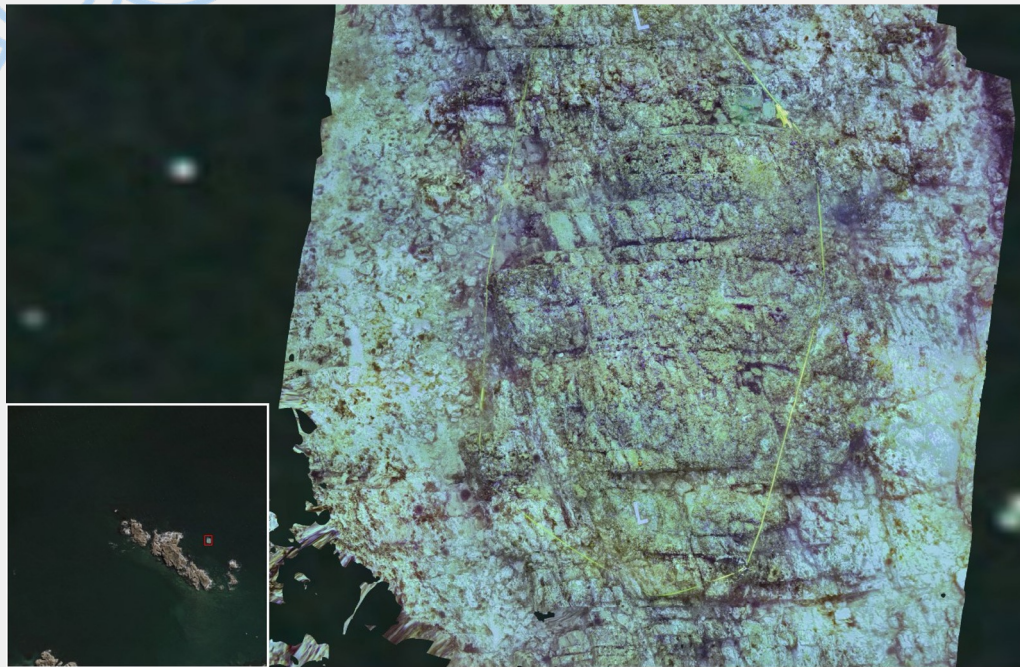
Discovering your own backyard



Mapping with photogrammetry and GPS

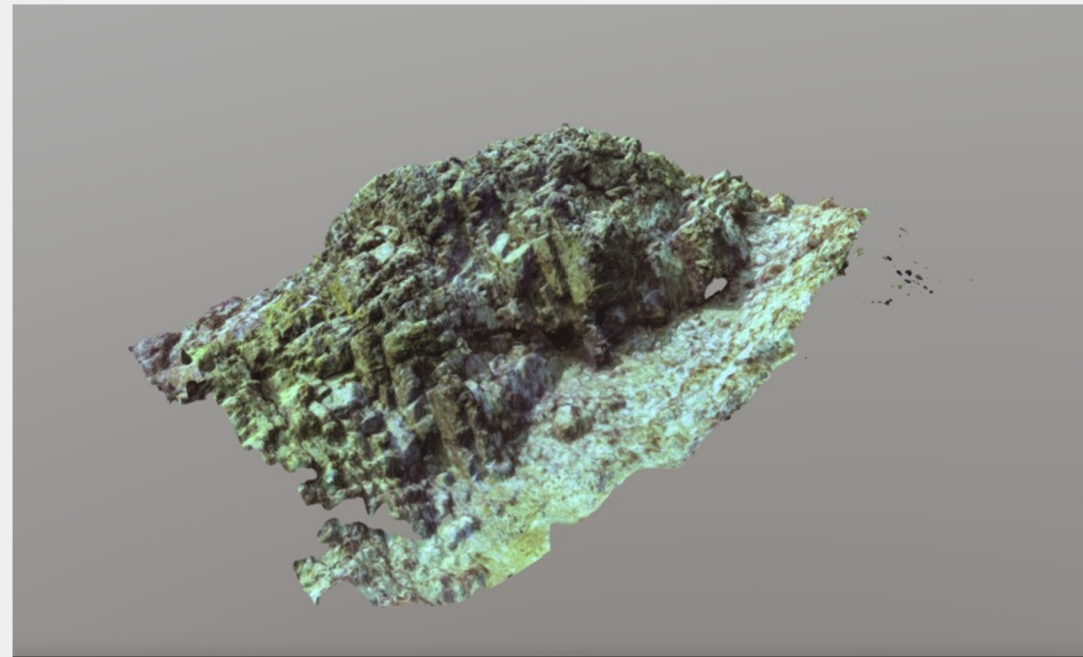


3D Modelling of key sites



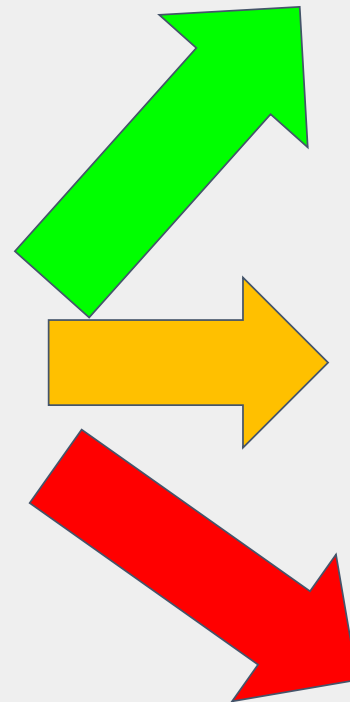
● Enclosure Bay: Exposed Plot

0 0.5 1 2 metres



What does the future hold ?

There are only 3 Trends



Keep going - build capacity - Ahu Moana focus

Watch / Monitor

Do Nothing



The Ahu moana concept

- Developed as part of the Government's Sea Change Plan
 - Tai Timu Tai Pari (2017).
- Sea Change was produced in response to the establishment of the Hauraki Gulf Marine Park in 2000
- Ahu Moana seeks to enable effective kaitiakitanga (by mana whenua) and guardianship (by local communities)
- Kaitiakitanga
- Collaboration
- Regeneration



WAIHEKE MARINE PROJECT

WAIHEKE KI UTA WAIHEKE KI TAI WAIHEKE KI TUA

G.I.F.T
Gulf Innovation
Fund Together

A Foundation North initiative



**FOUNDATION
NORTH**

*Te Kaitiaki Pūtea o
Tāmaki o Tai Tokerau*



WWF

**Waiheke
Local Board**

Auckland Council



National
SCIENCE
Challenges

SUSTAINABLE
SEAS

Ko ngā moana
whākauka

Emerged from



Umbrellaed by



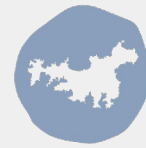
Endorsed by



Hauraki Gulf Forum

Tikapa Moana

Te Moananui-ā-Toi



**WAIHEKE
MARINE PROJECT**

WAIHEKE KI UTA WAIHEKE KI TAI WAIHEKE KI TUA

Questions and Answers

www.waihekemarineproject.org